

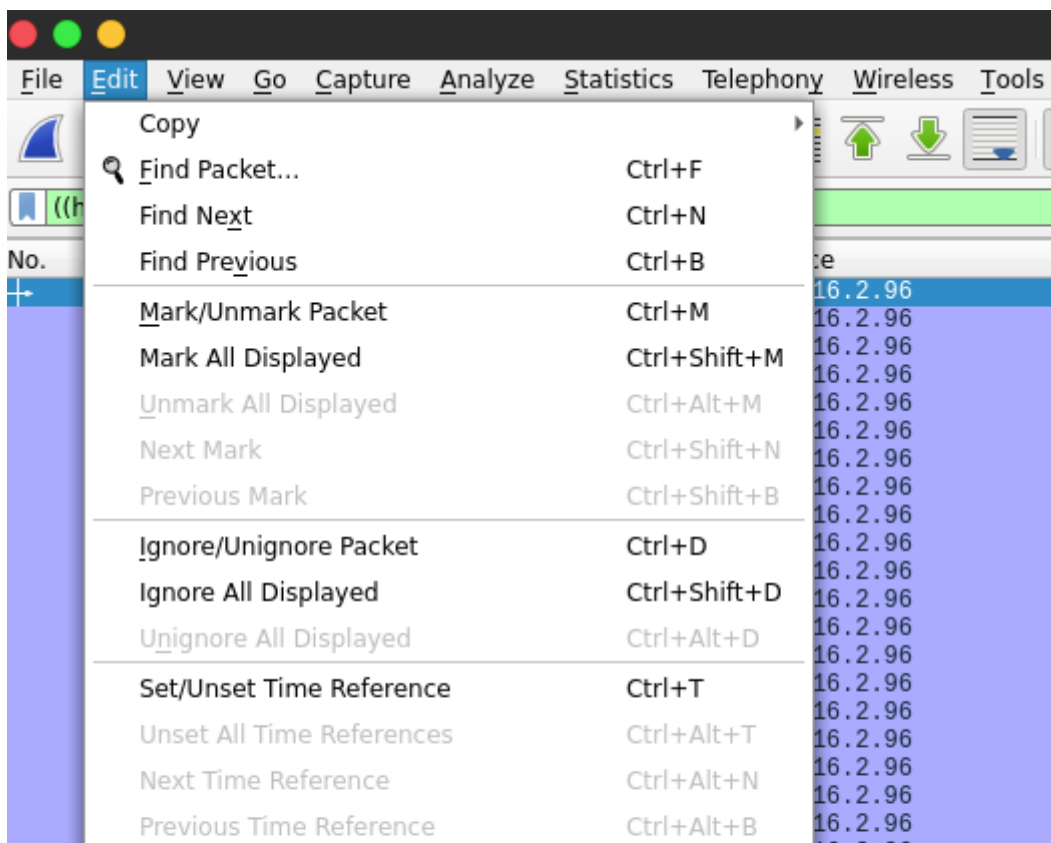
1.1 Importing Profiles

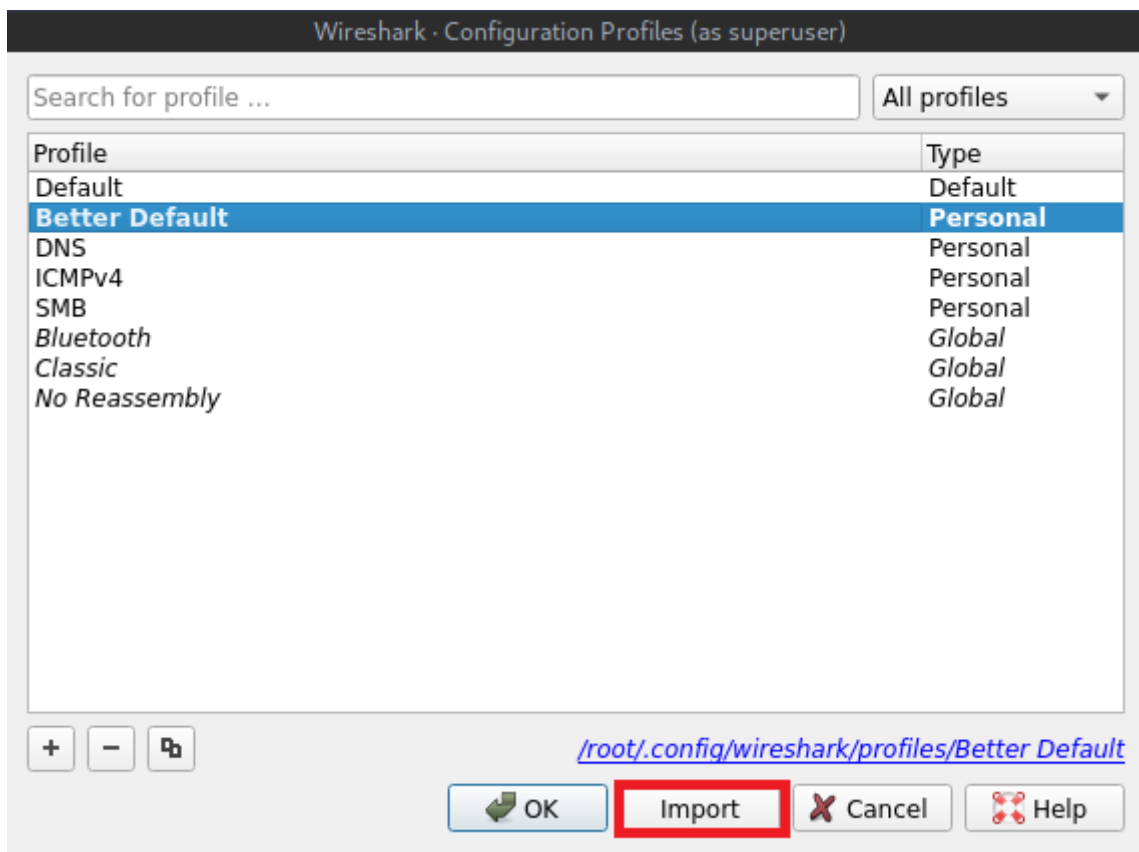
Importing a profile: There are many ways you can go about this, but for this guide, I will provide a link where I downloaded a profile called better default. You can change the layout once you import this profile.

Link to Better Default profile - <https://www.cellstream.com/resources/wireshark-profiles-repository/281-a-better-default-profile-for-wireshark/file>

Save the profile in any location you like, but record this location for reference so when you go to import, you know where it is

Step 1. Go to **Edit -> Configuration Profiles** or **Ctrl+Shift+A (Linux)**.
See screenshots





Ensure that the profile you just imported is selected and hit ok. You should see a noticeable change if you have a PCAP loaded. There are several other profiles you can download as well from the same site I provided early in this documentation. You will see some in the list such as the **DNS, ICMPv4, SMB**. I am using the Better Default profile from Section 1.a.i from the link in this document.

Revision #6

Created 11 December 2021 02:53:44 by Brian

Updated 30 July 2022 01:12:58 by Brian